

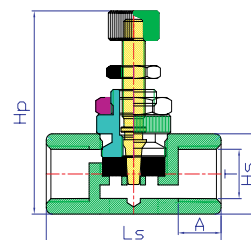


JOIN BRASS ENTERPRISE CO., LTD.

ACCESSORIES FOR AIR PRESSURE USE

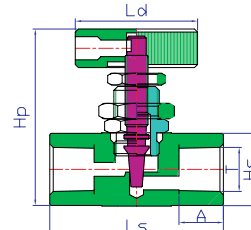
Major Applicable Fluid~ Air Operating temp. range: (NBR) -20°C ~ +80°C (-4°F ~ +176°F)
(VITON) -20°C ~ +180°C (-4°F ~ +356°F)

Speed Controller (Aluminum Alloy)



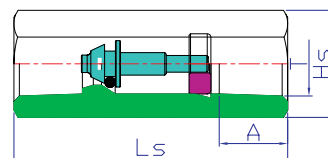
Computer No	Product Sign	Dimension (mm)				
		Hp	Ls	Hs	A	T
HRE	I11	52.6	44.9	4TS*19D	11	PT1/8"28P
HRE	I22	52.6	44.9	4TS*19D	11	PT1/4"19P
HRE	I44	55.8	55	4TS*25.6D	14	PT3/8"19P
HRE	I55	55.8	55	4TS*25.6D	14	PT1/2"14P

Precision Needle Valve (Brass)



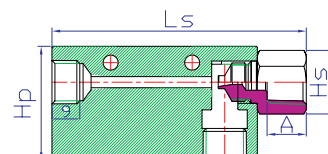
Computer No	Product Sign	Dimension (mm)					
		Hp	Ls	Ld	Hs	A	T
HRA	I-01	52.4	45	32.2	Ø18.7*4TS*19D	11.5	PT1/8"28P
HRA	I-02	52.4	45	32.2	Ø18.7*4TS*19D	11.5	PT1/4"19P

Check Valve (Brass)



Computer No	Product Sign	Dimension (mm)			
		Ls	Hs	A	T
HCV	I11	40	14D	11	PT1/8"28P
HCV	I22	50	17D	12.5	PT1/4"19P
HCV	I44	58	19D	14	PT3/8"19P
HCV	I55	66	25D	17	PT1/2"14P

Vacuum Generator (Aluminum Alloy)

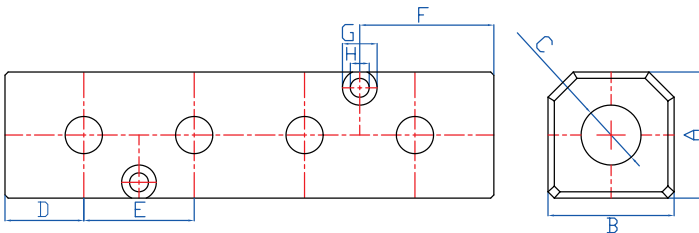


Computer No	Product Sign	Dimension (mm)				
		Hp	Ls	Hs	A	T
HSCV	02	35	78	17D	12	PT1/4"19P

ACCESSORIES FOR AIR PRESSURE USE

Major Applicable Fluid~ Air

Large Flow Branch Lines (Aluminum Alloy)



Dimension (mm)							
A	B	C	D	E	F	G	H
40	40	PT1/2" - PT3/4"	25	35	42.5	Ø11*7L	6

Computer No: AFE - N426

Both sides thread size		
Sign	$\frac{1}{2}$	6
Meaning	1/2"	3/4"

Upper thread size			
Sign	2	3	4
Meaning	1/4"	3/8"	1/2"

Number of upper holes				
Sign	2	3	4	5

Type of thread		
Sign	I	N
Meaning	PT	NPT

Computer No	Product Sign	Dimension	Computer No	Product Sign	Dimension
AFE	I22	two-way 1/4"PT	AFE	I42	four-way 1/4"PT
AFE	I23	two-way 3/8"PT	AFE	I43	four-way 3/8"PT
AFE	I24	two-way 1/2"PT	AFE	I44	four-way 1/2"PT
AFE	I32	three-way 1/4"PT	AFE	I52	five-way 1/4"PT
AFE	I33	three-way 3/8"PT	AFE	I53	five-way 3/8"PT
AFE	I34	three-way 1/2"PT	AFE	I54	five-way 1/2"PT

Small Flow Branch Lines (Aluminum Alloy)



Computer No	Product Sign	Dimension	Computer No	Product Sign	Dimension
AFF	I22	two-way 1/4"PT	AFF	I42	four-way 1/4"PT
AFF	I32	three-way 1/4"PT	AFF	I52	five-way 1/4"PT

Computer No: AFF - N42

Thread size	
Sign	2
Meaning	1/4"

Number of upper holes				
Sign	2	3	4	5

Type of thread		
Sign	I	N
Meaning	PT	NPT

Safety Valve (Brass)



Computer No	Product Sign	Dimension
HSV	I11	1/8"PT
HSV	I22	1/4"PT
HSV	I33	3/8"PT
HSV	M18	M18*P1.5